



Hua Mei Centre  
for Successful Ageing

*A Tsao Foundation Initiative*

# A COMPREHENSIVE COMMUNITY-BASED SERVICE MODEL FOR AGEING IN PLACE THE HUA MEI CENTRE FOR SUCCESSFUL AGING

A suite of 'Stand-alone' direct services that integrates around a person as her needs shift with advancing age

Ng Wai Chong  
MBBS, GDGM  
Tsao Foundation



# HUA MEI CLINIC

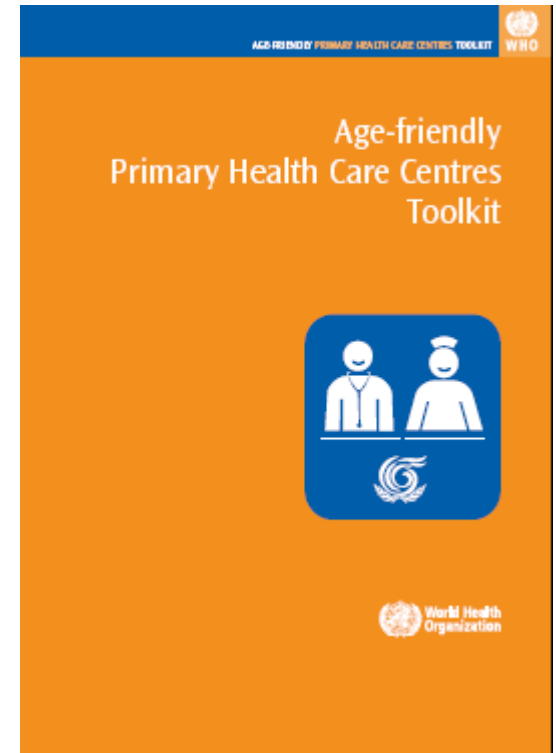
CREATED 1996

## WHO Pilot Site for Age-friendly Primary Care Clinic

### The Age-friendly Principles,

developed by the Age-friendly Advisory Group commissioned by the 2002 2<sup>nd</sup> UN World Assembly on Ageing in Madrid, to guide primary health care centres in modifying their structures to better meet the needs of the older persons:

- Information, Education, Communication and Training
- Health Care Management Systems
- Physical Environment of the Primary Health Care Centres

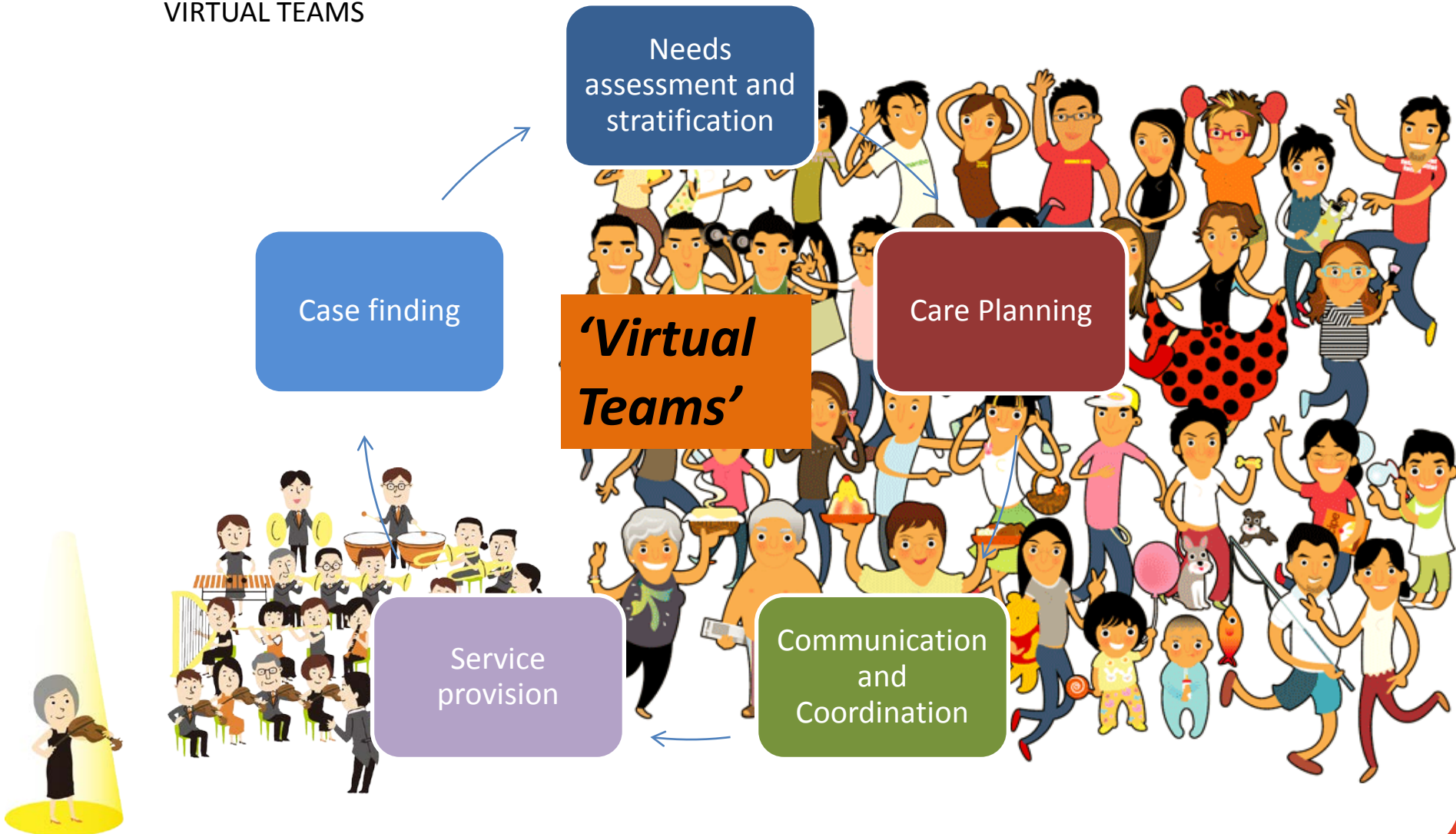


- Supported by HMCM and the rest of the HMCSA

# HUA MEI CARE MANAGEMENT

CREATED 1998

COMPREHENSIVE NEEDS ASSESSMENT, CARE PLANNING, MULTI-AGENCIES PARTNERSHIPS;  
VIRTUAL TEAMS



# HUA MEI DEMENTIA CARE SYSTEM 2014

Transitional physician-enhanced dementia-specific care management service with

- Behavioural management
- Supportive engagement
- Phases:
  - *Crises Management → 'Rementia' → Sustainability and Stand down*
- Time-limited (up to 6 months), fully subsidized, supported by HMCSA and other community services.

# HUA MEI EPICC

CREATED 2011

'Sick Bay'  
Facilities

Home-based  
health and  
social care  
provision

Meals

Social  
Engagement

Counse-  
ling

Health  
Monitoring

Day  
Health  
Centre

FRAIL ELDER  
AND FAMILY  
CARE PARTNER

Care  
Manage-  
ment

Resource  
mobili-  
sation

Medication  
Management

House  
chores

Managing  
Health  
Care-  
setting  
Transition

Primary  
Care

Rehab

ADL  
Support

Recreation  
and  
Learning

Escort and  
Transport

Support for  
Caregivers

Emergency  
Housing



# Hua Mei Mobile Clinic

Created 1993

- Team-managed Home-based Primary Care

The key features:

- **Interdisciplinary Health Team**
- **Primary care** approach
- Community-oriented **Geriatric and Gerontology training**
- Special attention to **Transitional and End-of-Life Care**
- **24H coverage**
- **Comprehensive assessment and care planning** using InterRAI Home Care, HMMC Initial Assessment and Care Plan Protocols
- Emphasis on **Care management**, providing multi-dimensional trans-disciplinary intervention.
- Use of **IT** Referral through AIC eReferral



# "COMSA"



# THANK YOU!